



September 2025

# Teacher of Biology

UPPINGHAM



## From the Headmaster, Dr Richard Maloney



Uppingham School has the highest ambitions for science education. Not only have we built the very best building for teaching science in the country, but we aspire for Uppingham to be the national centre for excellence in science education in the United Kingdom.

We seek to inspire and challenge our pupils to work at the highest academic levels. We are fortunate to have wonderful facilities and fantastic, highly committed teachers who nurture and support Uppinghamians at every stage of their time here.

I hope that you will be excited by the opportunity to join us in the Biology department. We are looking for someone with exceptional gifts and skills as a teacher to make a difference to our pupils.

I look forward to meeting you.

**Dr Richard Maloney**  
*Headmaster*



## Biology and Science at Uppingham

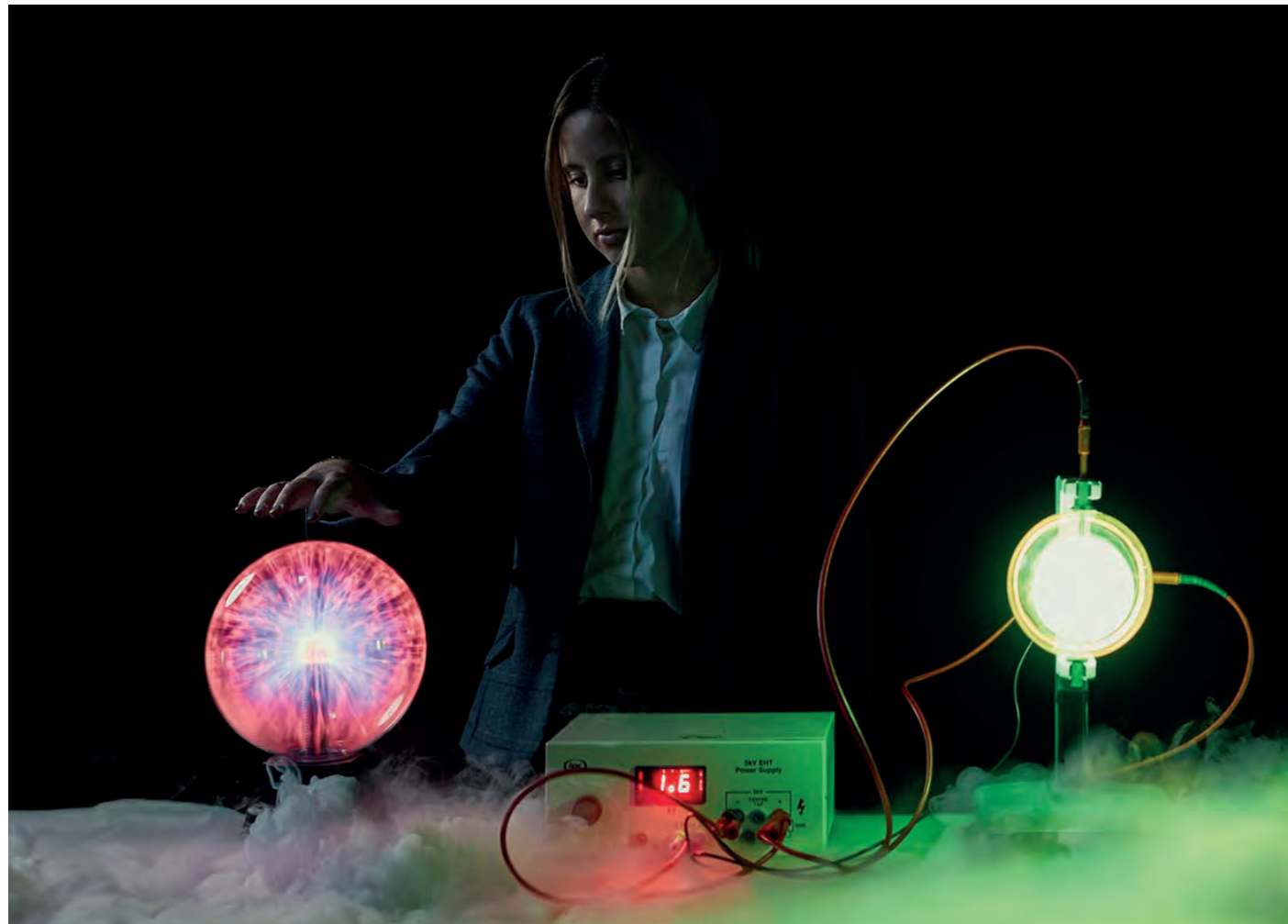
There are currently five Biology teachers, working within a highly collegiate faculty of fifteen Scientists, supported by a superb technical team.

Science education is based within our state-of-the-art Science building, with impressive laboratory and classroom spaces.

The pupils in the Lower Fifth and Upper Fifth (years 10 and 11) work towards the AQA GCSE Separate Sciences or CIE IGCSE Combined Science. We are also excited to be offering Science education to Year 7 and Year 8 from September 2025. In the Sixth form there are currently over 100 pupils studying Science A levels, with 33 pupils studying Biology.

The Biology department offers a range of extra-curricular and enrichment activities. Potential medical and veterinary applicants are thoroughly supported; there are Lower School and Sixth Form journal clubs for the most able Scientists, and the Biology Olympiad is well established. There is an impressive record of successful applications for onward Biosciences at university. The department is well-funded and particularly well-resourced, and new initiatives and experience are welcome.





## Teacher of Biology

We seek to appoint a first-rate teacher of Biology, from September 2025. The ability to teach a second Science to GCSE level would be desirable.

This position could equally suit an Early Career Teacher, or an experienced teacher.

Full-time teachers at Uppingham play a full part in the life of this seven-day week boarding school, by taking on responsibilities in addition to teaching.

Pupils have exceptionally varied opportunities which include a wide range of sports, CCF, community service and the Duke of Edinburgh Award. Each teacher is also attached as a tutor to one of the School's sixteen houses.

Accommodation may be available.

## About the person

The person appointed will be a strong, dynamic character with excellent subject knowledge, a good degree, good classroom management skills, a track record of excellent teaching and an appropriate rapport with pupils. The abilities to communicate well and work as part of a team are essential. The successful candidate will have high personal and professional standards, with well developed pastoral instincts.

## Teaching at Uppingham

### Remuneration and Benefits

The School has its own salary scale for qualified teachers, which is reviewed annually. The scale starts at £35,627 and progression is possible to £64,859. The School offers an extensive range of benefits including a school fee discount scheme for children of staff, free gym membership, subsidised medical scheme, excellent pension scheme, and free Westfield Healthcare and Rewards package which includes discounts in retail outlets, restaurants, cinemas and with holiday providers.

All members of staff are expected to live within reasonable distance of the School so that they can contribute to boarding school life easily and effectively. Assistance with reasonable removal expenses is provided. School property is sometimes available initially, at a subsidised rate, for those who wish to rent, and some partly furnished flats are provided for those coming straight from university or overseas. Most staff prefer to buy their own houses in due course, and there is a wide range of property available in the town and surrounding villages.

One of Uppingham's great community strengths is dining in house. Each day teaching staff are invited to lunch in a boarding house; a genuine pleasure in the midst of a busy week.

### Life in Rutland

Rutland – England's smallest county – is located in a beautiful part of the country. Alongside the stunning countryside, with Rutland Water only six miles away, there are a mass of leisure pursuits on our doorstep.

The town offers a range of independent stores and its location allows access to a number of thriving cities and towns. Uppingham is equidistant between Peterborough and Leicester which have excellent shopping centres, and Leicester, Nottingham and Birmingham all enjoy first-class theatre and concert facilities. Cambridge can be reached in 50 minutes and Oxford in an hour and a half. London is an hour by train from Corby, Kettering or Peterborough.

Uppingham town has nurseries, two maintained primary schools and an 11-16 community college, with sixth form colleges in nearby towns, such as Oakham and Stamford. There is a considerable community of young children within the area.

## The next steps

**Closing date:**  
Monday 21 April, 9am

**Interviews:**  
w/c Monday 28 April

Informal enquiries to the Head of Biology, Anna Cowling [ALC@uppingham.co.uk](mailto:ALC@uppingham.co.uk)

Applications must be made on the School's application form, which can be obtained via the School website or from [hr@uppingham.co.uk](mailto:hr@uppingham.co.uk).

Completed applications must reach us by the closing date and should be returned to [hr@uppingham.co.uk](mailto:hr@uppingham.co.uk) or by post to:

HR Department, Uppingham School  
High Street West, Uppingham, Rutland LE15 9QE

*Uppingham School is committed to safeguarding and promoting the welfare of children. Successful candidates must be willing to undergo full screening in accordance with Keeping Children Safe in Education (KCSiE), including an Enhanced Disclosure and Barring Service check. Issues relating to safeguarding and promoting the welfare of pupils will be explored at interview.*

*At Uppingham School, we value a truly inclusive, fair and equal work environment for all. Opportunities to work at Uppingham School are open to all, at all levels. We want to further increase the diversity of our workforce and actively encourage and welcome applications from candidates who have black, Asian, and minority ethnic backgrounds.*





Uppingham School  
Uppingham, Rutland LE15 9QE  
United Kingdom

Switchboard: +44 (0)1572 822216  
HR: +44 (0)1572 820647

[recruitment@uppingham.co.uk](mailto:recruitment@uppingham.co.uk)  
[www.uppingham.co.uk](http://www.uppingham.co.uk)

# UPPINGHAM